

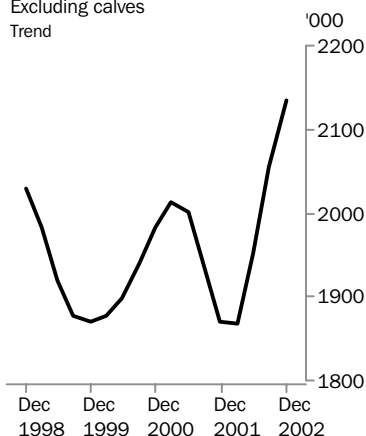


LIVESTOCK PRODUCTS AUSTRALIA

EMBARGO: 11:30AM (CANBERRA TIME) WED 12 FEB 2003

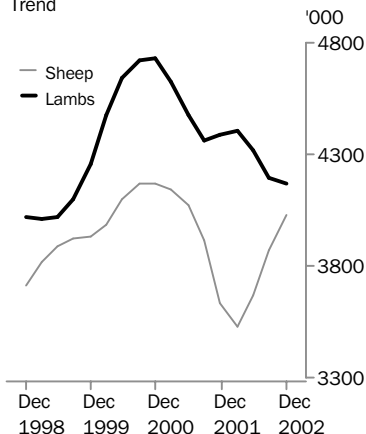
DECEMBER QTR KEY FIGURES

Cattle slaughtering

Excluding calves
Trend

Sheep and lamb slaughtering

Trend



TREND ESTIMATES

	Dec Qtr 2001 '000	Sep Qtr 2002 '000	Dec Qtr 2002 '000
Number slaughtered			
Cattle	1 869.6	2 055.1	2 135.3
Calves	237.0	275.4	290.8
Sheep	3 634.3	3 868.0	4 025.4
Lambs	4 383.9	4 191.7	4 170.8
Pigs	1 333.9	1 412.0	1 411.1
Chickens	102 308.2	107 287.3	105 882.8

	Dec Qtr 2001 tonnes	Sep Qtr 2002 tonnes	Dec Qtr 2002 tonnes
Meat produced			
Beef	489 493	528 055	539 697
Veal	7 590	8 730	8 299
Mutton	75 413	76 644	78 318
Lamb	87 217	82 427	80 307
Pig meat	97 709	102 691	102 920
Chicken meat	163 432	176 679	175 714
Wool receivals	134 324	136 791	135 358

	Sep Qtr 2001 ML	Jun Qtr 2002 ML	Sep Qtr 2002 ML
Whole milk intake by factories	2 728	2 900	2 849

DECEMBER QTR KEY POINTS

TREND ESTIMATES

- The trend estimate for the number of cattle slaughtered in December quarter 2002 rose by 4% to 2.1 million. The estimate for the number of cows and heifers slaughtered increased by 6% to 1.1 million, the highest quarterly trend estimate on record.
- In December quarter 2002, the trend estimate for the number of sheep slaughtered increased by 4% to 4.0 million. Lamb slaughter numbers remained steady at 4.2 million.
- The trend estimate for chicken meat production in December quarter 2002 fell by 1% to 176 million tonnes.

- For further information about these and related statistics, contact Gordon Cameron on Hobart 03 6222 5939, or the National Information and Referral Service on 1300 135 070.

NOTES

FORTHCOMING ISSUES

ISSUE (Quarter)

RELEASE DATE

March 2003

12 May 2003

June 2003

11 August 2003



CHANGES IN THIS ISSUE

There are no changes in this issue.

FORTHCOMING CHANGES

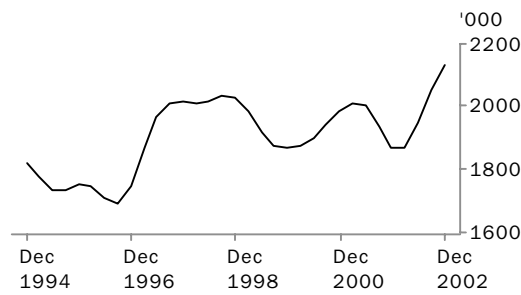
There are no forthcoming changes.



Dennis Trewin
Australian Statistician

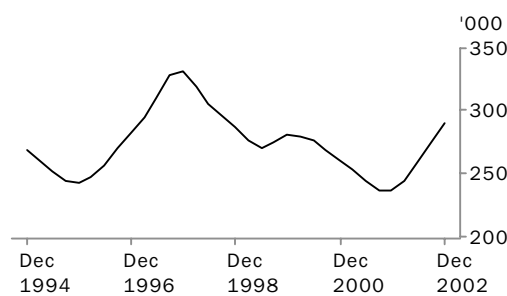
LIVESTOCK SLAUGHTERED: Trend

CATTLE (EXCLUDING CALVES)



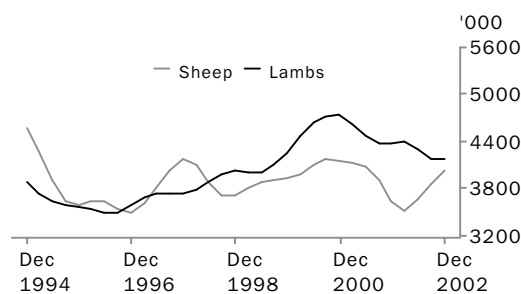
Continuing drought conditions saw the trend estimate for the number of cattle slaughtered in December quarter 2002 increase by 4% to 2.1 million, with slaughter numbers for cows and heifers at record levels.

CALVES



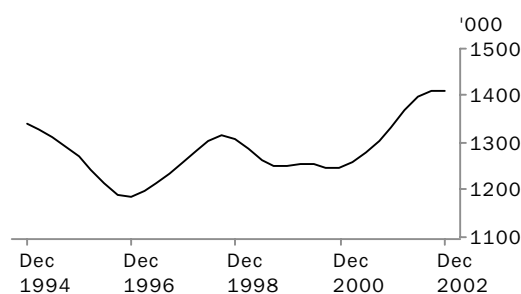
The trend estimate for the number of calves slaughtered in December quarter 2002 was 291,000, up by 6% on the September quarter 2002 estimate. This was the fifth consecutive quarterly increase.

SHEEP AND LAMBS



The trend estimate for the number of sheep slaughtered in December quarter 2002 was 4.0 million, up by 4% on the previous quarter. The trend estimate for the number of lambs slaughtered remained steady at 4.2 million.

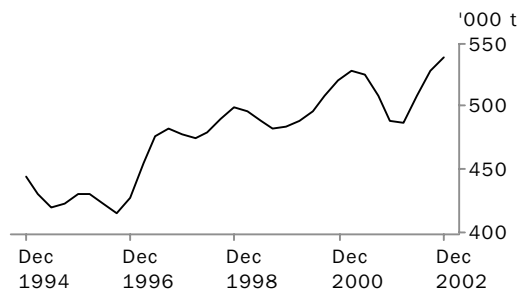
PIGS



The trend estimate for the number of pigs slaughtered in December quarter 2002 remained steady at a near record 1.4 million. This was the first quarter without growth since March quarter 2001, with increased feed prices as a result of the drought, reported to be impacting on production.

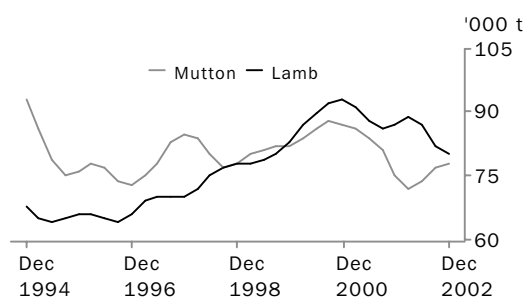
MEAT PRODUCTION: Trend

BEEF



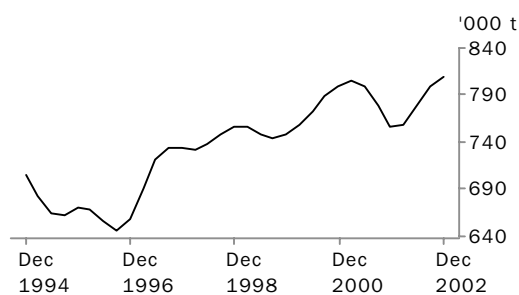
The trend estimate for beef production increased by 2% to 540,000 tonnes in December quarter 2002. Drought-affected cattle with lower slaughter weights and a higher female kill impacted on the level of production.

MUTTON AND LAMB



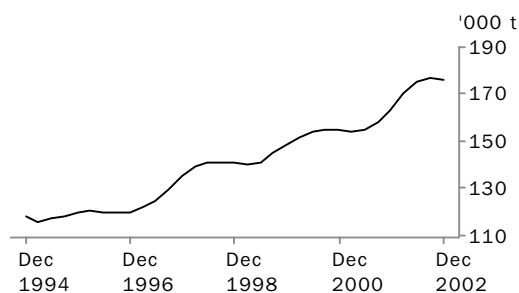
The trend estimate for mutton production increased by 2% to 78,300 tonnes in December quarter 2002. The trend estimate for lamb production fell by 3% to 80,300 tonnes. Drought continued to have an effect with increased numbers of 'unfinished' and drought-affected stock being slaughtered.

TOTAL RED MEAT



The trend estimate for total red meat production increased by 1% to 810,000 tonnes in December quarter 2002. Increased levels of beef production accounted for most of this rise. An increase in mutton production was offset by a similar decrease in lamb production.

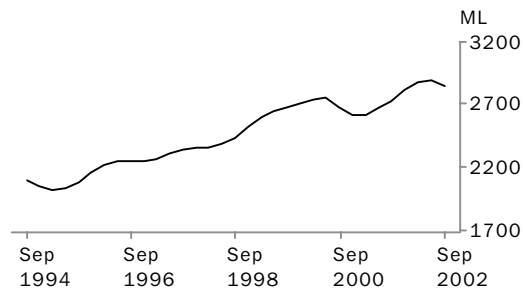
CHICKEN MEAT



The trend estimate for chicken meat production in December quarter 2002 dropped to 176,000 tonnes, down by 1% from the previous quarter's record level of production.

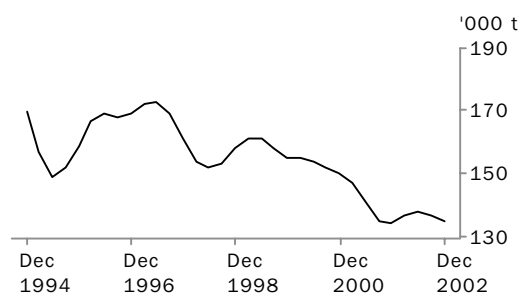
LIVESTOCK PRODUCTS: Trend

WHOLE MILK INTAKE BY FACTORIES



The trend estimate for whole milk intake by factories fell by 2% to 2.8 billion litres in September quarter 2002.

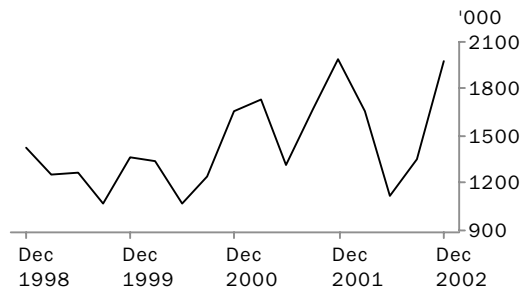
BROKERS AND DEALERS RECEIVALS OF TAXABLE WOOL



The trend estimate for wool receivals by brokers and dealers fell by 1% in December quarter 2002, to 135,000 tonnes. Low flock numbers and the pressure of drought continued to impact on production.

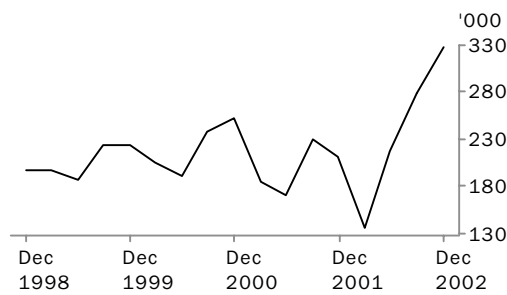
LIVESTOCK EXPORTS: Original

EXPORTS OF LIVE SHEEP



Live sheep exports increased by 45% in December quarter 2002 to 2.0 million, largely due to increased demand for the Ramadan festival. Gross value increased to a record \$131 million. This was due to an increase in numbers, since unit value fell by 8% to \$66.09.

EXPORTS OF LIVE CATTLE



Live cattle exports increased by 18% in December quarter 2002 to a record 328,000 due to increased exports to Asia. Unit value increased to \$596.02, pushing gross value of live cattle exports up to a record \$195 million.

LIVESTOCK SLAUGHTERED, Australia(a): All Series

Quarter	Bulls, bullocks and steers	Cows and heifers	Total cattle (excluding calves)	Calves	Sheep	Lambs	Pigs	Chickens
	'000	'000	'000	'000	'000	'000	'000	'000
ORIGINAL								
2001								
September	1 098.4	937.0	2 035.4	459.8	3 488.8	4 120.4	1 311.2	96 828.0
December	989.6	806.2	1 795.8	149.3	3 886.2	4 699.0	1 321.6	104 660.4
2002								
March	888.4	837.6	1 726.0	117.7	3 878.2	4 267.7	1 307.6	106 857.7
June	1 043.2	1 051.5	2 094.8	236.4	3 238.6	4 357.0	1 462.0	107 212.4
September	1 064.1	1 022.8	2 086.9	538.1	3 699.7	4 044.6	1 439.5	105 278.6
December	1 072.9	1 018.8	2 091.7	189.1	4 109.7	4 418.7	1 381.7	108 943.9
SEASONALLY ADJUSTED								
2001								
September	1 058.9	926.3	1 985.2	233.3	3 932.3	4 065.3	1 313.9	98 448.3
December	969.6	865.0	1 834.6	233.7	3 643.3	4 556.3	1 331.7	101 230.1
2002								
March	933.3	871.3	1 804.6	250.5	3 436.4	4 416.7	1 359.4	107 505.0
June	1 053.9	959.6	2 013.4	256.3	3 524.8	4 397.3	1 407.7	108 811.9
September	1 025.2	1 010.8	2 036.0	272.9	4 162.7	3 986.6	1 433.4	106 737.7
December	1 050.6	1 093.7	2 144.3	297.2	3 859.5	4 290.2	1 384.2	105 415.9
TREND ESTIMATES								
2001								
September	1 028.2	906.5	1 934.7	236.7	3 916.1	4 364.9	1 304.0	99 051.0
December	988.7	880.9	1 869.6	237.0	3 634.3	4 383.9	1 333.9	102 308.2
2002								
March	977.4	889.7	1 867.1	245.1	3 526.8	4 405.0	1 370.8	106 143.4
June	1 005.6	945.7	1 951.4	259.4	3 668.0	4 314.1	1 398.8	107 733.1
September	1 037.8	1 017.3	2 055.1	275.4	3 868.0	4 191.7	1 412.0	107 287.3
December	1 053.4	1 081.9	2 135.3	290.8	4 025.4	4 170.8	1 411.1	105 882.8

(a) For more information refer to paragraphs 5 to 9 of the Explanatory Notes.

LIVESTOCK PRODUCTS, Australia(a): All Series

RED MEAT.....

Quarter	Beef	Veal	Mutton	Lamb	Pig meat	Total red meat	Chicken meat	Whole milk intake by factories	Brokers and dealers receipts of taxable wool
	tonnes	tonnes	tonnes	tonnes	tonnes	tonnes	tonnes	ML	tonnes
ORIGINAL									
2001									
September	535 941	11 658	72 540	80 854	98 210	799 203	155 611	2 596	150 713
December	471 226	5 475	82 646	92 755	95 401	747 503	166 416	3 775	150 990
2002									
March	452 182	5 977	78 667	86 197	94 360	717 384	168 366	2 829	137 669
June	543 399	8 336	63 470	88 977	107 563	811 745	176 257	2 072	97 519
September	537 177	15 146	73 951	77 949	105 475	809 699	175 634	2 573	155 305
December	529 450	5 526	81 670	84 563	99 391	800 600	178 554	n.y.a.	163 959
SEASONALLY ADJUSTED									
2001									
September	522 767	7 515	81 952	79 118	97 026	788 378	158 610	2 707	131 994
December	478 013	7 279	75 775	90 422	97 329	748 818	161 053	2 734	126 557
2002									
March	469 193	8 414	70 384	88 285	99 441	735 717	171 026	2 897	151 061
June	529 912	8 453	71 023	91 054	101 593	802 035	176 994	3 058	131 229
September	523 611	9 761	83 362	76 220	104 247	797 201	178 091	2 680	136 887
December	537 077	7 359	74 077	82 565	101 413	802 491	172 936	n.y.a.	137 599
TREND									
2001									
September	507 690	7 511	81 303	85 886	95 606	777 996	157 763	2 728	135 080
December	489 493	7 590	75 413	87 217	97 709	757 422	163 432	2 812	134 324
2002									
March	488 422	8 213	72 445	88 660	99 905	757 645	170 328	2 880	137 029
June	507 766	8 729	74 066	86 533	101 584	778 678	175 182	2 900	138 092
September	528 055	8 730	76 644	82 427	102 691	798 547	176 679	2 849	136 791
December	539 697	8 299	78 318	80 307	102 920	809 541	175 714	n.y.a.	135 358

(a) For more information refer to paragraphs 5 to 9 and 13 to 15 of the Explanatory Notes.

NUMBER OF LIVESTOCK SLAUGHTERED(a), Bulls, Bullocks and Steers: All Series

	<i>New South Wales</i>	<i>Victoria</i>	<i>Queensland</i>	<i>South Australia</i>	<i>Western Australia</i>	<i>Tasmania</i>	<i>Australia</i>
<i>Quarter</i>	'000	'000	'000	'000	'000	'000	'000
ORIGINAL							
2001							
September	207.6	138.6	663.2	37.0	34.3	17.2	1 098.4
December	189.9	170.7	523.1	46.0	40.3	19.3	989.6
2002							
March	206.4	171.1	397.7	51.6	38.2	23.2	888.4
June	216.5	150.1	566.0	47.4	42.1	20.9	1 043.2
September	233.1	135.2	591.1	38.1	47.1	19.2	1 064.1
December	261.8	168.4	517.5	42.9	63.2	18.9	1 072.9
SEASONALLY ADJUSTED							
2001							
September	202.6	154.5	592.0	41.7	37.3	19.8	1 058.9
December	193.2	163.2	521.7	41.8	33.0	20.3	969.6
2002							
March	204.9	153.9	465.8	48.0	41.0	20.3	933.3
June	220.1	159.2	553.2	50.6	45.6	20.0	1 053.9
September	227.1	152.7	528.0	42.8	51.0	22.1	1 025.2
December	266.5	159.2	515.2	39.2	50.5	20.0	1 050.6
TREND ESTIMATES							
2001							
September	199.1	156.3	568.7	42.3	38.0	19.9	1 028.2
December	199.4	158.2	528.1	43.8	36.5	19.7	988.7
2002							
March	203.7	157.9	508.3	47.0	39.6	20.4	977.4
June	217.5	156.4	516.6	47.3	45.4	20.7	1 005.6
September	236.4	156.0	528.1	44.4	49.5	20.9	1 037.8
December	255.6	157.2	530.1	40.7	51.5	20.8	1 053.4

(a) For more information refer to paragraph 4 of the Explanatory Notes.

NUMBER OF LIVESTOCK SLAUGHTERED(a), Cows and Heifers: All Series

	<i>New South Wales</i>	<i>Victoria</i>	<i>Queensland</i>	<i>South Australia</i>	<i>Western Australia</i>	<i>Tasmania</i>	<i>Australia</i>
<i>Quarter</i>	'000	'000	'000	'000	'000	'000	'000
ORIGINAL							
2001							
September	232.7	194.1	394.9	35.2	64.6	14.6	937.0
December	237.8	193.8	262.0	35.0	58.6	17.9	806.2
2002							
March	240.6	195.8	282.3	38.9	62.5	16.4	837.6
June	281.0	216.9	424.9	41.6	55.6	30.4	1 051.5
September	246.6	249.0	412.6	41.9	57.8	13.8	1 022.8
December	249.1	267.4	351.7	50.5	70.8	28.3	1 018.8
SEASONALLY ADJUSTED							
2001							
September	240.3	206.6	364.8	37.2	65.8	19.8	926.3
December	250.5	190.6	303.4	37.2	54.9	19.9	865.0
2002							
March	240.3	191.2	320.9	36.8	60.8	15.0	871.3
June	262.7	212.4	361.8	39.3	60.1	24.0	959.6
September	255.0	264.7	381.7	44.3	58.9	18.6	1 010.8
December	255.0	263.3	406.8	53.8	66.3	31.5	1 093.7
TREND ESTIMATES							
2001							
September	251.0	203.2	335.2	35.7	61.1	20.4	906.5
December	245.2	191.2	325.7	36.6	60.1	18.6	880.9
2002							
March	248.1	197.0	327.8	37.4	58.7	18.1	889.7
June	254.1	220.3	352.3	40.2	59.5	20.0	945.7
September	256.5	247.9	382.8	45.4	61.7	23.6	1 017.3
December	257.8	268.9	405.7	50.5	63.3	28.0	1 081.9

(a) For more information refer to paragraph 4 of the Explanatory Notes.

NUMBER OF LIVESTOCK SLAUGHTERED(a), Total Cattle (excluding Calves): All Series

	<i>New South Wales</i>	<i>Victoria</i>	<i>Queensland</i>	<i>South Australia</i>	<i>Western Australia</i>	<i>Tasmania</i>	<i>Australia</i>
<i>Quarter</i>	'000	'000	'000	'000	'000	'000	'000
ORIGINAL							
2001							
September	440.3	332.7	1 058.1	72.2	98.9	31.8	2 035.4
December	427.7	364.5	785.1	81.0	98.8	37.2	1 795.8
2002							
March	447.0	367.0	680.0	90.4	100.7	39.6	1 726.0
June	497.5	367.0	990.9	88.9	97.7	51.3	2 094.8
September	479.7	384.2	1 003.7	80.1	104.9	33.0	2 086.9
December	510.9	435.7	869.2	93.4	134.0	47.2	2 091.7
SEASONALLY ADJUSTED							
2001							
September	442.9	361.1	956.8	78.9	103.1	39.6	1 985.2
December	443.7	353.8	825.1	79.0	87.9	40.2	1 834.6
2002							
March	445.2	345.2	786.7	84.7	101.8	35.3	1 804.6
June	482.8	371.7	915.0	89.9	105.7	44.1	2 013.4
September	482.1	417.4	909.7	87.1	109.9	40.7	2 036.0
December	521.5	422.5	922.0	92.9	116.8	51.5	2 144.3
TREND ESTIMATES							
2001							
September	450.1	359.5	903.9	78.1	99.1	40.3	1 934.7
December	444.6	349.4	853.8	80.5	96.6	38.3	1 869.6
2002							
March	451.8	354.9	836.1	84.4	98.3	38.5	1 867.1
June	471.6	376.7	868.9	87.5	104.9	40.7	1 951.4
September	493.0	403.9	910.9	89.8	111.2	44.4	2 055.1
December	513.4	426.2	935.8	91.2	114.8	48.8	2 135.3

(a) For more information refer to paragraph 4 of the Explanatory Notes.

NUMBER OF LIVESTOCK SLAUGHTERED(a), Calves: All Series

	<i>New South Wales</i>	<i>Victoria</i>	<i>Queensland</i>	<i>South Australia</i>	<i>Western Australia</i>	<i>Tasmania</i>	<i>Australia</i>
<i>Quarter</i>	'000	'000	'000	'000	'000	'000	'000
ORIGINAL							
2001							
September	45.6	347.3	26.2	2.9	1.8	35.8	459.8
December	39.7	78.9	20.5	1.8	1.8	6.4	149.3
2002							
March	57.1	31.1	25.5	2.2	1.3	0.5	117.7
June	63.2	139.6	27.5	2.8	1.2	1.9	236.4
September	66.2	413.4	23.2	3.3	1.3	30.4	538.1
December	30.1	127.1	21.1	2.4	1.4	6.8	189.1
SEASONALLY ADJUSTED							
2001							
September	46.9	141.9	25.6	2.3	1.8	11.6	233.3
December	45.2	157.1	22.0	2.5	1.7	11.3	233.7
2002							
March	54.5	174.5	26.2	2.4	1.4	7.0	250.5
June	57.4	160.4	25.6	2.5	1.2	6.9	256.3
September	68.3	168.5	22.7	2.6	1.3	9.8	272.9
December	34.4	255.1	22.7	3.4	1.3	12.1	297.2
TREND ESTIMATES							
2001							
September	48.4	148.7	25.4	2.3	1.7	11.2	236.7
December	47.6	157.5	24.4	2.4	1.6	9.8	237.0
2002							
March	54.2	159.9	24.5	2.4	1.4	8.2	245.1
June	58.6	169.4	24.7	2.5	1.3	7.9	259.4
September	55.7	191.7	23.8	2.8	1.3	9.4	275.4
December	47.4	221.7	22.3	3.1	1.3	11.3	290.8

(a) For more information refer to paragraph 4 of the Explanatory Notes.

NUMBER OF LIVESTOCK SLAUGHTERED(a), Sheep: All Series

	<i>New South Wales</i>	<i>Victoria</i>	<i>Queensland</i>	<i>South Australia</i>	<i>Western Australia</i>	<i>Tasmania</i>	<i>Australia</i>
<i>Quarter</i>	'000	'000	'000	'000	'000	'000	'000
ORIGINAL							
2001							
September	1 443.5	850.3	328.3	268.7	549.4	48.5	3 488.8
December	1 496.0	1 080.6	305.0	338.4	591.5	74.8	3 886.2
2002							
March	1 450.1	1 074.1	334.3	396.7	549.0	74.0	3 878.2
June	1 323.0	814.5	366.5	333.8	322.2	78.6	3 238.6
September	1 594.5	876.7	345.0	429.2	399.4	54.9	3 699.7
December	1 636.0	1 136.9	300.7	463.5	502.3	70.4	4 109.7
SEASONALLY ADJUSTED							
2001							
September	1 508.2	1 015.4	307.2	364.6	631.2	83.0	3 932.3
December	1 458.1	970.2	317.4	301.4	507.7	73.8	3 643.3
2002							
March	1 365.3	930.9	327.6	328.9	467.2	54.1	3 436.4
June	1 384.7	908.1	384.6	355.5	410.7	75.6	3 524.8
September	1 661.3	1 044.4	322.4	583.1	458.6	93.8	4 162.7
December	1 597.1	1 023.0	313.6	412.9	430.5	69.7	3 859.5
TREND ESTIMATES							
2001							
September	1 511.9	1 047.4	335.7	357.3	572.5	79.4	3 916.1
December	1 429.9	970.0	323.9	318.2	521.6	68.1	3 634.3
2002							
March	1 400.2	928.0	336.0	336.2	466.7	67.9	3 526.8
June	1 457.3	953.3	348.7	405.9	437.6	73.7	3 668.0
September	1 552.8	994.6	338.8	465.3	434.8	80.1	3 868.0
December	1 642.8	1 037.0	320.7	493.0	435.3	82.2	4 025.4

(a) For more information refer to paragraph 4 of the Explanatory Notes.

NUMBER OF LIVESTOCK SLAUGHTERED(a), Lambs: All Series

	<i>New South Wales</i>	<i>Victoria</i>	<i>Queensland</i>	<i>South Australia</i>	<i>Western Australia</i>	<i>Tasmania</i>	<i>Australia</i>
<i>Quarter</i>	'000	'000	'000	'000	'000	'000	'000
ORIGINAL							
2001							
September	1 083.6	1 674.6	257.8	567.9	418.5	118.0	4 120.4
December	1 141.8	1 917.0	151.9	822.4	565.2	100.9	4 699.0
2002							
March	1 170.2	1 688.6	113.0	767.8	431.2	97.0	4 267.7
June	1 163.3	1 717.2	104.8	775.4	485.6	110.6	4 357.0
September	1 145.0	1 688.3	111.9	558.9	441.7	98.9	4 044.6
December	1 103.8	1 866.1	71.2	734.6	552.0	91.0	4 418.7
SEASONALLY ADJUSTED							
2001							
September	1 027.0	1 683.8	233.6	593.4	435.6	125.1	4 065.3
December	1 151.4	1 792.2	164.8	821.1	501.7	109.1	4 556.3
2002							
March	1 227.0	1 734.4	116.3	792.9	470.6	87.0	4 416.7
June	1 162.8	1 783.8	104.4	721.0	486.4	109.4	4 397.3
September	1 084.8	1 695.0	101.3	583.0	461.0	104.0	3 986.6
December	1 114.1	1 747.7	77.4	734.6	490.2	98.5	4 290.2
TREND ESTIMATES							
2001							
September	1 076.5	1 810.5	223.6	688.8	466.0	108.8	4 364.9
December	1 140.8	1 745.0	171.5	752.8	467.9	107.7	4 383.9
2002							
March	1 183.1	1 743.8	126.6	766.0	481.3	102.2	4 405.0
June	1 164.4	1 749.7	104.9	717.0	478.2	100.5	4 314.1
September	1 121.6	1 733.7	93.3	668.2	475.3	102.7	4 191.7
December	1 096.7	1 730.9	84.5	662.9	480.1	103.0	4 170.8

(a) For more information refer to paragraph 4 of the Explanatory Notes.

NUMBER OF LIVESTOCK SLAUGHTERED(a), Pigs: All Series

	New South Wales	Victoria	Queensland	South Australia	Western Australia	Tasmania	Australia
Quarter	'000	'000	'000	'000	'000	'000	'000
ORIGINAL							
2001							
September	474.0	267.1	267.0	145.4	142.3	13.7	1 311.2
December	465.8	281.0	277.9	139.4	140.9	14.7	1 321.6
2002							
March	452.9	242.0	275.5	180.8	143.6	11.4	1 307.6
June	492.3	252.0	313.3	224.5	164.7	13.3	1 462.0
September	473.0	258.3	307.0	220.6	166.3	12.1	1 439.5
December	470.5	261.2	268.5	208.0	158.4	13.0	1 381.7
SEASONALLY ADJUSTED							
2001							
September	467.7	269.4	271.7	148.3	144.7	13.7	1 313.9
December	463.6	281.7	277.0	152.2	146.3	15.5	1 331.7
2002							
March	472.9	252.0	287.2	173.9	147.2	12.1	1 359.4
June	487.0	242.4	297.8	208.7	154.7	12.2	1 407.7
September	459.8	258.7	310.8	229.8	167.4	12.0	1 433.4
December	466.2	258.2	269.6	225.5	165.1	13.8	1 384.2
TREND ESTIMATES							
2001							
September	464.5	270.3	266.9	144.8	143.1	14.5	1 304.0
December	470.1	267.8	278.5	156.2	145.5	14.0	1 333.9
2002							
March	474.4	258.7	290.3	178.7	149.5	13.0	1 370.8
June	474.5	251.4	297.3	203.4	156.0	12.3	1 398.8
September	470.3	252.3	295.4	222.5	162.7	12.4	1 412.0
December	464.1	258.4	286.5	233.8	168.4	13.2	1 411.1

(a) For more information refer to paragraph 4 of the Explanatory Notes.

NUMBER OF CHICKENS SLAUGHTERED(a): All Series

	<i>New South Wales</i>	<i>Victoria</i>	<i>Queensland</i>	<i>South Australia</i>	<i>Western Australia</i>	<i>Australia</i>
<i>Quarter</i>	'000	'000	'000	'000	'000	'000
ORIGINAL						
2001						
September	37 628.1	24 681.4	16 076.3	n.p.	n.p.	96 828.0
December	39 023.9	27 947.8	18 125.2	n.p.	n.p.	104 660.4
2002						
March	40 026.8	27 691.0	18 063.0	n.p.	n.p.	106 857.7
June	39 955.7	29 041.4	18 676.1	n.p.	n.p.	107 212.4
September	39 172.0	28 625.5	18 477.3	n.p.	n.p.	105 278.6
December	38 943.3	30 716.2	19 686.2	n.p.	n.p.	108 943.9
SEASONALLY ADJUSTED						
2001						
September	37 958.0	25 386.1	16 594.5	n.p.	n.p.	98 448.3
December	38 311.0	26 738.2	17 381.8	n.p.	n.p.	101 230.1
2002						
March	40 115.7	28 182.5	18 007.0	n.p.	n.p.	107 505.0
June	40 464.5	29 182.8	18 945.5	n.p.	n.p.	108 811.9
September	39 398.0	29 196.9	19 087.8	n.p.	n.p.	106 737.7
December	38 434.4	29 295.1	18 867.7	n.p.	n.p.	105 415.9
TREND ESTIMATES						
2001						
September	38 112.7	25 728.1	16 730.5	n.p.	n.p.	99 051.0
December	38 823.5	26 705.3	17 302.2	n.p.	n.p.	102 308.2
2002						
March	39 728.2	28 052.9	18 117.2	n.p.	n.p.	106 143.4
June	39 995.4	28 894.7	18 704.1	n.p.	n.p.	107 733.1
September	39 536.9	29 274.1	18 996.7	n.p.	n.p.	107 287.3
December	38 706.1	29 412.5	19 096.3	n.p.	n.p.	105 882.8

(a) For more information refer to paragraphs 8 and 9 of the Explanatory Notes.

NUMBER OF LIVESTOCK SLAUGHTERED(a): Original

Financial year	New South Wales '000	Victoria '000	Queensland '000	South Australia '000	Western Australia '000	Tasmania '000	Australia '000
BULLS, BULLOCKS AND STEERS							
1999-2000	755.4	710.0	1 958.2	169.5	181.5	109.0	3 892.7
2000-01	767.1	632.0	2 266.6	179.7	187.0	90.2	4 126.9
2001-02	820.5	630.6	2 150.0	182.0	154.9	80.6	4 019.7
COWS AND HEIFERS							
1999-2000	969.4	813.8	1 354.2	145.2	212.4	108.9	3 627.3
2000-01	1 060.8	891.9	1 390.1	137.0	228.4	94.2	3 813.8
2001-02	992.1	800.6	1 364.2	150.6	241.2	79.4	3 632.3
TOTAL CATTLE (excluding calves)							
1999-2000	1 724.8	1 523.8	3 312.5	314.7	393.9	217.9	7 520.0
2000-01	1 827.9	1 523.9	3 656.6	316.7	415.4	184.4	7 940.7
2001-02	1 812.6	1 431.1	3 514.1	332.6	396.1	160.0	7 652.0
CALVES							
1999-2000	211.0	678.5	141.7	17.6	10.5	62.1	1 122.1
2000-01	226.0	608.9	135.1	11.6	5.6	49.7	1 037.5
2001-02	205.7	597.0	99.7	9.6	6.0	44.6	963.3
SHEEP							
1999-2000	5 385.6	3 816.0	1 423.9	1 223.8	3 418.1	589.9	15 857.2
2000-01	5 857.6	4 193.3	1 489.2	1 488.2	3 235.0	364.7	16 628.0
2001-02	5 712.6	3 819.5	1 334.0	1 337.7	2 012.0	275.8	14 491.7
LAMBS							
1999-2000	4 059.0	7 144.5	917.6	2 634.7	2 345.0	456.3	17 557.1
2000-01	4 203.2	8 090.0	1 024.1	2 875.1	2 020.0	416.1	18 628.5
2001-02	4 558.9	6 997.4	627.6	2 933.4	1 900.5	426.4	17 444.1
PIGS							
1999-2000	1 408.2	1 443.7	1 111.2	469.2	513.9	70.1	5 024.7
2000-01	1 739.5	1 065.6	1 078.4	525.7	542.6	57.6	5 016.3
2001-02	1 885.0	1 042.1	1 133.7	690.0	591.4	53.1	5 402.4
CHICKENS							
1999-2000	139 966.7	105 889.3	68 922.0	n.p.	n.p.	n.p.	393 991.8
2000-01	151 686.8	104 080.0	68 002.0	n.p.	n.p.	n.p.	398 868.6
2001-02	156 634.5	109 361.6	70 940.6	n.p.	n.p.	n.p.	415 558.5

(a) For more information refer to paragraphs 4, 5 and 7 to 9 of the Explanatory Notes.

RED MEAT PRODUCED(a), Beef: All Series

	<i>New South Wales</i>	<i>Victoria</i>	<i>Queensland</i>	<i>South Australia</i>	<i>Western Australia</i>	<i>Tasmania</i>	<i>Australia</i>
<i>Quarter</i>	<i>tonnes</i>	<i>tonnes</i>	<i>tonnes</i>	<i>tonnes</i>	<i>tonnes</i>	<i>tonnes</i>	<i>tonnes</i>
ORIGINAL							
2001							
September	111 329	79 315	295 051	18 271	23 022	8 662	535 941
December	108 701	87 825	218 502	21 325	24 289	10 295	471 226
2002							
March	114 423	88 827	189 243	23 748	24 400	11 260	452 182
June	126 515	86 931	269 953	22 539	23 459	13 706	543 399
September	121 725	87 609	274 019	19 663	25 322	8 555	537 177
December	125 017	98 065	236 347	23 357	33 534	12 850	529 450
SEASONALLY ADJUSTED							
2001							
September	112 859	86 636	265 656	20 535	24 587	11 052	522 767
December	111 330	83 830	230 055	20 228	20 623	10 608	478 013
2002							
March	114 407	82 959	216 424	21 958	24 814	10 277	469 193
June	121 912	89 966	253 435	23 144	26 147	11 896	529 912
September	123 360	95 619	246 821	22 037	27 010	10 918	523 611
December	128 160	93 558	248 534	22 212	27 427	13 264	537 077
TREND ESTIMATES							
2001							
September	113 651	85 214	252 854	20 170	23 754	10 828	507 690
December	112 761	83 885	237 295	20 772	23 109	10 528	489 493
2002							
March	115 113	85 432	231 165	21 840	23 854	10 725	488 422
June	119 968	89 302	238 818	22 409	25 730	11 149	507 766
September	124 317	93 158	248 110	22 497	27 048	11 846	528 055
December	127 428	95 237	253 024	22 253	27 485	12 563	539 697

(a) For more information refer to paragraphs 4 to 6 of the Explanatory Notes.

RED MEAT PRODUCED(a), Veal: All Series

	<i>New South Wales</i>	<i>Victoria</i>	<i>Queensland</i>	<i>South Australia</i>	<i>Western Australia</i>	<i>Tasmania</i>	<i>Australia</i>
<i>Quarter</i>	<i>tonnes</i>	<i>tonnes</i>	<i>tonnes</i>	<i>tonnes</i>	<i>tonnes</i>	<i>tonnes</i>	<i>tonnes</i>
ORIGINAL							
2001							
September	2 839	6 645	1 265	75	118	704	11 658
December	2 471	1 713	983	57	106	133	5 475
2002							
March	3 610	899	1 289	69	82	16	5 977
June	4 072	2 742	1 315	77	71	46	8 336
September	4 228	9 076	1 063	92	84	590	15 146
December	1 749	2 590	893	76	69	138	5 526
SEASONALLY ADJUSTED							
2001							
September	2 943	2 764	1 291	63	116	234	7 515
December	2 819	3 283	1 038	74	100	227	7 279
2002							
March	3 485	4 203	1 262	72	84	164	8 414
June	3 633	3 183	1 251	70	75	151	8 453
September	4 392	3 766	1 085	78	83	196	9 761
December	1 999	5 004	941	100	64	239	7 359
TREND ESTIMATES							
2001							
September	3 020	2 998	1 166	66	104	228	7 511
December	2 991	3 387	1 184	69	100	205	7 590
2002							
March	3 448	3 555	1 207	71	89	177	8 213
June	3 733	3 703	1 188	74	80	170	8 729
September	3 509	3 999	1 107	82	75	191	8 730
December	2 912	4 421	977	92	70	223	8 299

(a) For more information refer to paragraphs 4 to 6 of the Explanatory Notes.

RED MEAT PRODUCED(a), Mutton: All Series

	<i>New South Wales</i>	<i>Victoria</i>	<i>Queensland</i>	<i>South Australia</i>	<i>Western Australia</i>	<i>Tasmania</i>	<i>Australia</i>
<i>Quarter</i>	<i>tonnes</i>	<i>tonnes</i>	<i>tonnes</i>	<i>tonnes</i>	<i>tonnes</i>	<i>tonnes</i>	<i>tonnes</i>
ORIGINAL							
2001							
September	31 491	16 829	5 823	6 290	11 154	952	72 540
December	33 543	21 675	5 720	8 221	11 988	1 500	82 646
2002							
March	30 252	20 596	6 458	8 895	11 008	1 459	78 667
June	26 557	15 324	6 800	6 936	6 346	1 505	63 470
September	33 082	16 277	6 185	9 351	8 015	1 040	73 951
December	32 791	21 673	5 662	10 073	10 100	1 371	81 670
SEASONALLY ADJUSTED							
2001							
September	32 266	19 695	5 430	8 349	12 745	1 695	81 952
December	31 885	19 145	5 847	7 005	10 189	1 483	75 775
2002							
March	28 931	18 162	6 258	7 467	9 428	1 088	70 384
June	28 655	17 366	7 394	7 823	8 181	1 382	71 023
September	33 779	19 000	5 759	12 420	9 152	1 851	83 362
December	31 228	19 198	5 802	8 578	8 575	1 359	74 077
TREND ESTIMATES							
2001							
September	32 607	20 553	6 167	8 265	11 553	1 584	81 303
December	30 864	19 035	5 996	7 341	10 518	1 363	75 413
2002							
March	29 815	18 030	6 331	7 593	9 369	1 332	72 445
June	30 223	18 093	6 574	8 890	8 748	1 416	74 066
September	31 333	18 515	6 279	9 926	8 670	1 543	76 644
December	32 453	19 129	5 859	10 310	8 671	1 592	78 318

(a) For more information refer to paragraphs 4 to 6 of the Explanatory Notes.

RED MEAT PRODUCED(a), Lamb: All Series

	<i>New South Wales</i>	<i>Victoria</i>	<i>Queensland</i>	<i>South Australia</i>	<i>Western Australia</i>	<i>Tasmania</i>	<i>Australia</i>
<i>Quarter</i>	<i>tonnes</i>	<i>tonnes</i>	<i>tonnes</i>	<i>tonnes</i>	<i>tonnes</i>	<i>tonnes</i>	<i>tonnes</i>
ORIGINAL							
2001							
September	21 724	32 479	4 857	11 694	7 745	2 355	80 854
December	22 656	36 784	2 878	17 627	10 828	1 981	92 755
2002							
March	23 506	33 065	2 093	17 232	8 380	1 922	86 197
June	23 517	33 997	2 024	17 732	9 498	2 209	88 977
September	22 126	31 844	2 076	11 493	8 414	1 996	77 949
December	21 230	34 682	1 294	14 864	10 676	1 817	84 563
SEASONALLY ADJUSTED							
2001							
September	20 571	32 246	4 389	12 488	8 131	2 427	79 118
December	22 906	34 911	3 089	17 844	9 646	2 200	90 422
2002							
March	24 616	33 740	2 204	17 485	9 126	1 753	88 285
June	23 499	35 339	2 024	16 239	9 412	2 150	91 054
September	20 947	31 578	1 846	12 240	8 856	2 049	76 220
December	21 483	32 954	1 413	15 063	9 515	2 013	82 565
TREND ESTIMATES							
2001							
September	21 386	34 934	4 226	14 596	8 770	2 124	85 886
December	22 844	33 933	3 239	16 344	8 954	2 141	87 217
2002							
March	23 759	34 079	2 394	16 959	9 304	2 041	88 660
June	23 177	33 914	1 984	15 762	9 253	1 996	86 533
September	21 984	33 043	1 737	14 271	9 185	2 042	82 427
December	21 103	32 559	1 541	13 750	9 279	2 069	80 307

(a) For more information refer to paragraphs 4 to 6 of the Explanatory Notes.

RED MEAT PRODUCED(a), Pig Meat: All Series

	<i>New South Wales</i>	<i>Victoria</i>	<i>Queensland</i>	<i>South Australia</i>	<i>Western Australia</i>	<i>Tasmania</i>	<i>Australia</i>
<i>Quarter</i>	<i>tonnes</i>	<i>tonnes</i>	<i>tonnes</i>	<i>tonnes</i>	<i>tonnes</i>	<i>tonnes</i>	<i>tonnes</i>
ORIGINAL							
2001							
September	37 022	19 581	20 563	10 274	9 848	844	98 210
December	35 263	19 425	20 798	9 754	9 212	868	95 401
2002							
March	33 973	17 016	20 384	12 583	9 670	674	94 360
June	37 889	17 630	24 194	15 718	11 267	773	107 563
September	35 465	18 435	23 922	15 531	11 311	701	105 475
December	35 048	18 363	19 723	14 865	10 557	730	99 391
SEASONALLY ADJUSTED							
2001							
September	36 277	19 461	20 563	10 429	9 699	834	97 026
December	35 391	19 700	21 213	10 716	9 632	924	97 329
2002							
March	35 635	17 751	21 510	12 455	10 119	722	99 441
June	36 785	16 877	22 554	14 355	10 642	693	101 593
September	34 750	18 526	23 946	15 805	11 001	692	104 247
December	35 216	18 225	20 112	16 344	11 112	778	101 413
TREND ESTIMATES							
2001							
September	35 765	19 353	20 121	10 206	9 621	877	95 606
December	35 934	18 895	21 090	11 051	9 787	837	97 709
2002							
March	35 945	18 131	22 054	12 519	10 130	765	99 905
June	35 804	17 681	22 567	14 169	10 569	712	101 584
September	35 506	17 851	22 427	15 568	10 936	707	102 691
December	35 077	18 339	21 728	16 458	11 178	741	102 920

(a) For more information refer to paragraphs 4 to 6 of the Explanatory Notes.

TOTAL RED MEAT PRODUCED(a): All Series

	<i>New South Wales</i>	<i>Victoria</i>	<i>Queensland</i>	<i>South Australia</i>	<i>Western Australia</i>	<i>Tasmania</i>	<i>Australia</i>
<i>Quarter</i>	<i>tonnes</i>	<i>tonnes</i>	<i>tonnes</i>	<i>tonnes</i>	<i>tonnes</i>	<i>tonnes</i>	<i>tonnes</i>
ORIGINAL							
2001							
September	204 406	154 849	327 560	46 604	51 887	13 516	799 203
December	202 632	167 422	248 880	56 984	56 424	14 777	747 503
2002							
March	205 765	160 402	219 466	62 526	53 540	15 331	717 384
June	218 550	156 625	304 287	63 002	50 642	18 239	811 745
September	216 626	163 241	307 264	56 131	53 146	12 882	809 699
December	215 835	175 373	263 919	63 235	64 936	16 905	800 600
SEASONALLY ADJUSTED							
2001							
September	204 916	160 802	297 329	51 864	55 278	16 242	788 378
December	204 331	160 869	261 242	55 867	50 190	15 442	748 818
2002							
March	207 074	156 815	247 658	59 437	53 571	14 004	735 717
June	214 484	162 731	286 658	61 631	54 457	16 272	802 035
September	217 228	168 489	279 457	62 580	56 102	15 706	797 201
December	218 086	168 939	276 802	62 297	56 693	17 653	802 491
TREND ESTIMATES							
2001							
September	206 429	163 052	284 534	53 303	53 802	15 641	777 996
December	205 394	159 135	268 804	55 577	52 468	15 074	757 422
2002							
March	208 080	159 227	263 151	58 982	52 746	15 040	757 645
June	212 905	162 693	271 131	61 304	54 380	15 443	778 678
September	216 649	166 566	279 660	62 344	55 914	16 329	798 547
December	218 973	169 685	283 129	62 863	56 683	17 188	809 541

(a) For more information refer to paragraphs 4 to 6 of the Explanatory Notes.

CHICKEN MEAT PRODUCED(a): All Series

	<i>New South Wales</i>	<i>Victoria</i>	<i>Queensland</i>	<i>South Australia</i>	<i>Western Australia</i>	<i>Australia</i>
<i>Quarter</i>	<i>tonnes</i>	<i>tonnes</i>	<i>tonnes</i>	<i>tonnes</i>	<i>tonnes</i>	<i>tonnes</i>
ORIGINAL						
2001						
September	65 833	41 170	22 114	n.p.	n.p.	155 611
December	67 103	45 297	25 427	n.p.	n.p.	166 416
2002						
March	68 514	45 473	24 890	n.p.	n.p.	168 366
June	71 110	49 116	26 886	n.p.	n.p.	176 257
September	69 583	49 518	28 299	n.p.	n.p.	175 634
December	65 052	54 717	29 584	n.p.	n.p.	178 554
SEASONALLY ADJUSTED						
2001						
September	66 848	42 562	22 716	n.p.	n.p.	158 610
December	65 897	43 363	24 254	n.p.	n.p.	161 053
2002						
March	68 981	46 266	25 271	n.p.	n.p.	171 026
June	71 459	48 788	27 057	n.p.	n.p.	176 994
September	70 067	51 235	29 088	n.p.	n.p.	178 091
December	64 016	52 362	28 191	n.p.	n.p.	172 936
TREND ESTIMATES						
2001						
September	65 614	42 844	23 045	n.p.	n.p.	157 763
December	67 395	43 874	23 949	n.p.	n.p.	163 432
2002						
March	69 303	46 026	25 549	n.p.	n.p.	170 328
June	70 035	48 688	27 102	n.p.	n.p.	175 182
September	68 894	50 897	28 226	n.p.	n.p.	176 679
December	66 397	52 529	28 922	n.p.	n.p.	175 714

(a) For more information refer to paragraphs 8 and 9 of the Explanatory Notes.

MEAT PRODUCED(a): Original

<i>Financial year</i>	<i>New South Wales</i>	<i>Victoria</i>	<i>Queensland</i>	<i>South Australia</i>	<i>Western Australia</i>	<i>Tasmania</i>	<i>Australia</i>
	<i>tonnes</i>	<i>tonnes</i>	<i>tonnes</i>	<i>tonnes</i>	<i>tonnes</i>	<i>tonnes</i>	<i>tonnes</i>
BEEF							
1999-2000	431 983	351 273	932 053	78 001	94 973	57 557	1 952 321
2000-01	461 380	354 819	1 034 624	82 533	100 524	48 771	2 085 952
2001-02	460 968	342 898	972 749	85 882	95 171	43 923	2 002 748
VEAL							
1999-2000	13 044	13 370	6 550	471	859	1 236	35 581
2000-01	14 214	11 842	5 684	307	382	996	33 474
2001-02	12 992	11 998	4 852	278	377	899	31 446
MUTTON							
1999-2000	118 947	76 719	27 704	28 969	69 077	11 796	333 212
2000-01	126 838	84 016	28 401	36 103	64 936	7 232	347 526
2001-02	121 843	74 425	24 801	30 342	40 496	5 416	297 323
LAMB							
1999-2000	80 016	140 215	17 456	56 667	44 136	8 833	347 323
2000-01	82 907	157 898	19 648	61 893	37 070	8 014	367 430
2001-02	91 404	136 325	11 851	64 285	36 452	8 466	348 783
PIG MEAT							
1999-2000	103 234	106 690	82 037	31 927	34 201	4 403	362 855
2000-01	130 371	78 954	78 500	36 679	36 781	3 583	365 168
2001-02	144 146	73 652	85 940	48 329	39 996	3 159	395 534
TOTAL RED MEAT							
1999-2000	747 224	688 266	1 065 801	196 036	243 247	83 825	3 031 291
2000-01	815 710	687 529	1 166 857	217 514	239 693	68 596	3 199 550
2001-02	831 353	639 298	1 100 193	229 116	212 492	61 863	3 075 834
CHICKEN MEAT							
1999-2000	221 245	170 123	95 387	n.p.	n.p.	n.p.	597 680
2000-01	244 302	175 773	93 863	n.p.	n.p.	n.p.	619 406
2001-02	272 561	181 056	99 316	n.p.	n.p.	n.p.	666 650

(a) For more information refer to paragraphs 4 to 9 of the Explanatory Notes.

EXPORTS OF FRESH, FROZEN AND PROCESSED MEAT, Australia(a): Original

Period	FRESH, CHILLED OR FROZEN MEAT.....								PROCESSED MEAT.		
	<i>Beef bone -in</i>	<i>Beef bone -out</i>	<i>Veal bone -in</i>	<i>Veal bone -out</i>	<i>Mutton bone -in</i>	<i>Mutton bone -out</i>	<i>Lamb bone -in</i>	<i>Lamb bone -out</i>	<i>Pork</i>	<i>Bacon and ham</i>	<i>Canned meat</i>
	tonnes	tonnes	tonnes	tonnes	tonnes	tonnes	tonnes	tonnes	tonnes	tonnes	tonnes
1999-2000	45 508	818 667	1 555	7 395	120 946	55 499	86 551	11 064	39 227	88	13 867
2000-01	42 000	940 312	2 078	6 440	127 841	63 754	103 652	12 328	43 939	280	14 884
2001-02	34 126	892 317	2 424	7 119	113 894	52 072	104 565	13 794	58 964	122	15 724
2001											
September	7 088	256 607	579	3 313	26 461	12 849	22 738	2 904	15 056	14	4 175
December	9 400	217 731	640	1 598	34 090	14 171	30 480	3 439	14 188	59	3 820
2002											
March	8 683	173 928	576	777	30 606	11 812	25 134	3 827	14 586	32	3 736
June	8 954	244 051	628	1 431	22 736	13 239	26 213	3 624	15 135	17	3 993
September	10 683	233 025	971	2 254	25 413	14 110	21 852	2 989	15 760	45	4 146
December	11 169	251 582	1 159	2 171	37 210	16 566	21 464	2 769	16 414	141	3 792

(a) For more information refer to paragraphs 10 and 11 of the Explanatory Notes.

EXPORTS OF LIVE SHEEP AND CATTLE, Australia(a): Original

	<i>Number</i>	<i>Gross weight</i>	<i>Gross value</i>	<i>Unit value</i>
<i>Period</i>	<i>'000</i>	<i>'000 tonnes</i>	<i>\$'000</i>	<i>\$</i>
SHEEP				
1999-2000	4 858.6	243.3	180 345	37.12
2000-01	5 936.0	283.6	257 661	43.41
2001-02	6 443.2	318.0	391 705	60.79
2001				
September	1 666.6	78.2	93 117	55.87
December	1 995.2	95.4	119 573	59.93
2002				
March	1 660.7	85.5	103 425	62.28
June	1 120.7	59.0	75 591	67.45
September	1 357.8	64.8	97 537	71.84
December	1 975.0	97.3	130 522	66.09
CATTLE				
1999-2000	845.7	317.1	432 645	511.60
2000-01	845.8	314.3	481 827	569.66
2001-02	797.0	293.5	525 535	659.41
2001				
September	231.0	82.3	141 626	613.16
December	211.6	77.6	152 357	720.01
2002				
March	136.6	58.2	95 678	700.34
June	217.8	75.5	135 875	623.90
September	278.4	100.5	160 046	574.88
December	327.8	117.2	195 401	596.02

(a) For more information refer to paragraph 12 of the Explanatory Notes.

WHOLE MILK INTAKE, By Factories(a): All Series

	<i>New South Wales(b)</i>	<i>Victoria</i>	<i>Queensland</i>	<i>South Australia</i>	<i>Western Australia</i>	<i>Tasmania</i>	<i>Australia(c)</i>
<i>Quarter</i>	<i>ML</i>	<i>ML</i>	<i>ML</i>	<i>ML</i>	<i>ML</i>	<i>ML</i>	<i>ML</i>
ORIGINAL							
2001							
June	287	1 090	170	157	89	105	1 898
September	335	1 689	191	172	99	110	2 596
December	378	2 617	202	214	104	261	3 775
2002							
March	317	1 873	178	173	93	195	2 829
June	313	1 226	174	157	97	106	2 072
September	340	1 665	195	171	103	100	2 573
SEASONALLY ADJUSTED							
2001							
June	322	1 839	187	182	93	174	2 797
September	327	1 770	181	173	93	163	2 707
December	334	1 771	190	177	101	161	2 734
2002							
March	332	1 923	181	184	100	177	2 897
June	351	2 060	191	181	100	175	3 058
September	332	1 743	189	172	96	148	2 680
TREND ESTIMATES							
2001							
June	326	1 733	186	176	94	160	2 675
September	326	1 779	185	177	95	166	2 728
December	332	1 848	185	179	98	170	2 812
2002							
March	338	1 905	186	181	100	170	2 880
June	340	1 925	188	180	99	168	2 900
September	340	1 886	189	176	98	160	2 849

(a) For more information refer to paragraph 13 of the Explanatory Notes.

(b) New South Wales total includes Australian Capital Territory.

(c) Australian total excludes Northern Territory.

Source: Original series data from Australian Dairy Corporation.

MARKET MILK SALES, By Factories(a): All Series

Quarter	New South Wales(b)	Victoria	Queensland	South Australia	Western Australia	Tasmania	Australia(c)
	ML	ML	ML	ML	ML	ML	ML
ORIGINAL							
2001							
June	152	115	99	51	49	12	478
September	156	118	103	49	48	12	485
December	151	116	100	45	48	12	471
2002							
March	154	112	100	45	48	12	471
June	161	114	100	45	48	13	481
September	156	119	103	47	50	13	487
SEASONALLY ADJUSTED							
2001							
June	152	115	100	51	48	12	479
September	152	114	102	49	48	12	476
December	151	116	99	44	48	12	471
2002							
March	157	116	102	46	49	12	482
June	162	113	100	46	48	13	482
September	152	115	101	46	50	13	477
TREND ESTIMATES							
2001							
June	154	115	100	50	48	12	478
September	151	115	100	48	48	12	475
December	153	115	101	46	48	12	476
2002							
March	156	115	101	45	48	12	478
June	158	115	101	46	49	12	480
September	157	114	101	46	49	13	480

(a) For more information refer to paragraph 13 of the Explanatory Notes.

(b) New South Wales total includes Australian Capital Territory.

(c) Australian total excludes Northern Territory.

Source: Original series data from Australian Dairy Corporation.

BROKERS AND DEALERS RECEIVALS OF TAXABLE WOOL(a): All Series

Quarter	New South Wales	Victoria	Queensland	South Australia	Western Australia	Tasmania	Australia	% of total received by brokers
	tonnes	tonnes	tonnes	tonnes	tonnes	tonnes	tonnes	%
ORIGINAL								
2001								
September	51 757	36 536	10 740	22 732	26 658	2 290	150 713	83.0
December	44 304	45 778	4 852	24 445	26 675	4 937	150 990	79.4
2002								
March	36 307	35 103	6 450	22 041	34 034	3 736	137 669	81.4
June	31 557	24 921	8 145	13 927	15 661	3 306	97 519	82.1
September	59 548	36 698	5 156	22 009	27 502	4 393	155 305	79.2
December	51 238	44 750	3 918	26 887	32 239	4 927	163 959	73.1
SEASONALLY ADJUSTED								
2001								
September	43 652	34 331	8 300	19 281	24 310	2 121	131 994	..
December	38 895	31 395	7 411	20 806	24 575	3 475	126 557	..
2002								
March	40 842	42 761	7 443	25 344	29 185	5 488	151 061	..
June	40 084	38 120	6 854	17 903	23 885	4 382	131 229	..
September	50 806	34 553	4 008	18 559	25 047	3 913	136 887	..
December	44 508	30 993	5 981	22 913	29 736	3 469	137 599	..
TREND ESTIMATES								
2001								
September	42 594	34 655	8 597	21 272	25 077	2 884	135 080	..
December	40 108	35 580	7 891	21 628	25 586	3 532	134 324	..
2002								
March	40 374	38 135	7 031	21 361	25 922	4 206	137 029	..
June	43 061	38 063	6 217	20 476	25 895	4 380	138 092	..
September	45 827	35 263	5 456	19 922	26 326	3 997	136 791	..
December	47 083	31 799	5 045	20 452	27 350	3 628	135 358	..

(a) For more information refer to paragraphs 14 and 15 of the Explanatory Notes.

LIVESTOCK PRODUCTS(a): Original

Financial year	New South Wales	Victoria	Queensland	South Australia	Western Australia	Tasmania	Australia
----------------	-----------------	----------	------------	-----------------	-------------------	----------	-----------

WHOLE MILK INTAKE BY FACTORIES (ML)(b)

1999-2000	1 395	6 870	848	714	412	609	10 847
2000-01	1 326	6 777	760	699	393	590	10 545
2001-02	1 343	7 405	744	715	393	672	11 271

MARKET MILK SALES BY FACTORIES (ML)(b)(c)

1999-2000	597	440	383	185	190	48	1 842
2000-01	630	455	393	199	192	50	1 920
2001-02	621	459	402	184	192	50	1 908

BROKERS AND DEALERS RECEIVALS OF TAXABLE WOOL (Tonnes)

1999-2000	190 398	152 890	45 661	91 795	143 445	17 331	641 520
2000-01	182 882	148 333	40 723	89 739	115 475	12 709	589 861
2001-02	163 926	142 338	30 188	83 144	103 028	14 268	536 891

(a) For more information refer to paragraph 13 to 15 of the Explanatory Notes.

(b) New South Wales includes Australian Capital Territory. Australian total excludes Northern Territory.

(c) Prior to 2000-01, interstate transfers of UHT milk were excluded from these figures. From 2000-01 onwards, interstate transfers of UHT milk have been included in their state of destination.

Source: Original series data from Australian Dairy Corporation.

WHAT IF...? REVISIONS TO TREND ESTIMATES

EFFECT OF NEW SEASONALLY ADJUSTED ESTIMATES ON TREND ESTIMATES

Each time new seasonally adjusted estimates become available, trend estimates are revised (see paragraphs 20 and 21 of the Explanatory Notes).

TREND REVISIONS

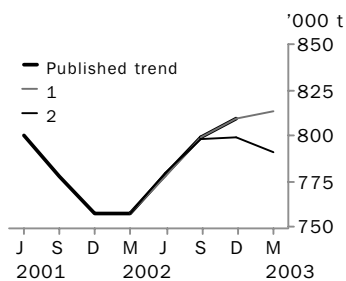
The graphs and tables which follow present the effect of two possible new seasonally adjusted estimates on the previous trend estimates:

1 The March Quarter 2003 seasonally adjusted estimate is higher than the December Quarter 2002 estimate by the percentage shown.

2 The March Quarter 2003 seasonally adjusted estimate is lower than the December Quarter 2002 estimate by the percentage shown.

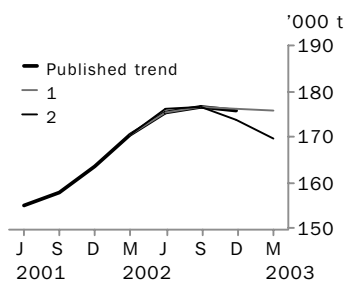
These percentages were chosen because they represent the average absolute quarterly percentage change for these series over the last ten years.

RED MEAT PRODUCTION



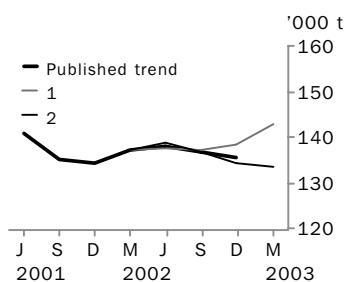
	TREND AS PUBLISHED		WHAT IF NEXT QUARTER'S SEASONALLY ADJUSTED ESTIMATE:			
	number	% change	1 <i>rises by 3% on Dec Qtr 2002</i>		2 <i>falls by 3% on Dec Qtr 2002</i>	
	number	% change	number	% change	number	% change
Dec Qtr 2001	757 422	-2.6	757 421	-2.6	757 421	-2.6
Mar Qtr 2002	757 645	0.0	757 645	0.0	757 645	0.0
Jun Qtr 2002	778 678	2.8	777 776	2.7	779 850	2.9
Sep Qtr 2002	798 547	2.6	798 596	2.7	797 797	2.3
Dec Qtr 2002	809 541	1.4	809 190	1.3	799 165	0.2
Mar Qtr 2003	—	—	813 238	0.5	790 974	-1.0

CHICKEN MEAT PRODUCTION



	TREND AS PUBLISHED		WHAT IF NEXT QUARTER'S SEASONALLY ADJUSTED ESTIMATE:			
	number	% change	1 <i>rises by 4% on Dec Qtr 2002</i>		2 <i>falls by 4% on Dec Qtr 2002</i>	
	number	% change	number	% change	number	% change
Dec Qtr 2001	163 432	3.6	163 432	3.6	163 432	3.6
Mar Qtr 2002	170 328	4.2	170 327	4.2	170 327	4.2
Jun Qtr 2002	175 182	2.8	175 443	3.0	175 971	3.3
Sep Qtr 2002	176 679	0.9	176 599	0.7	176 415	0.3
Dec Qtr 2002	175 714	-0.5	176 072	-0.3	173 532	-1.6
Mar Qtr 2003	—	—	175 626	-0.3	169 600	-2.3

WOOL RECEIVALS



	TREND AS PUBLISHED		WHAT IF NEXT QUARTER'S SEASONALLY ADJUSTED ESTIMATE:			
	number	% change	1 <i>rises by 9% on Dec Qtr 2002</i>		2 <i>falls by 9% on Dec Qtr 2002</i>	
	number	% change	number	% change	number	% change
Dec Qtr 2001	134 324	-0.6	134 324	-0.6	134 324	-0.6
Mar Qtr 2002	137 029	2.0	137 029	2.0	137 029	2.0
Jun Qtr 2002	138 092	0.8	137 720	0.5	138 625	1.2
Sep Qtr 2002	136 791	-0.9	136 954	-0.6	136 583	-1.5
Dec Qtr 2002	135 358	-1.0	138 549	1.2	134 160	-1.8
Mar Qtr 2003	—	—	142 938	3.2	133 530	-0.5

WHAT IF...? REVISIONS TO TREND ESTIMATES

EFFECT OF NEW SEASONALLY ADJUSTED ESTIMATES ON TREND ESTIMATES

Readers should exercise care when interpreting trend estimates. The last three trend estimates, in particular, are likely to be revised when new seasonally adjusted estimates become available.

TREND REVISIONS

The graph and tables which follow present the effect of two possible scenarios on the previous trend estimates:

1 The December Quarter 2002 seasonally adjusted estimate is higher than the September Quarter 2002 estimate by:

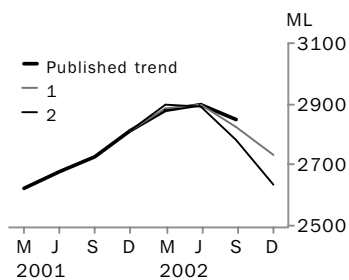
- +2% for whole milk intake by factories.

2 The December Quarter 2002 seasonally adjusted estimate is lower than the September Quarter 2002 estimate by:

- 2% for whole milk intake by factories.

These percentages were chosen because they represent the average absolute quarterly percentage change for these series over the last ten years.

WHOLE MILK INTAKE BY FACTORIES



Quarter	Trend as Published	% change
Sep Qtr 2001	2 728	2.0
Dec Qtr 2001	2 812	3.1
Mar Qtr 2002	2 880	2.4
Jun Qtr 2002	2 900	0.7
Sep Qtr 2002	2 849	-1.8
Dec Qtr 2002	—	—

WHAT IF NEXT QUARTER'S SEASONALLY ADJUSTED ESTIMATE:

1 <i>rises by 2% on Sep Qtr 2002</i>		2 <i>falls by 2% on Sep Qtr 2002</i>	
number	% change	number	% change
2 727	2.0	2 727	2.0
2 812	3.1	2 812	3.1
2 887	2.7	2 896	3.0
2 897	0.3	2 894	-0.1
2 824	-2.5	2 780	-3.9
2 733	-3.2	2 635	-5.2

EXPLANATORY NOTES

INTRODUCTION

- 1** This publication contains information on livestock slaughterings, meat production, exports of live sheep and live cattle, exports of fresh, frozen and processed meat, and whole milk intake by factories, market milk sales by factories and receivals of taxable wool by wool brokers and dealers.
- 2** The figures shown in this publication have been revised where necessary and as a consequence may not agree with similar data shown in previous publications.
- 3** Where figures have been rounded, discrepancies may occur between sums of the component items and totals.
- 4** Unless indicated otherwise, Australian totals include data for all states and both territories.

LIVESTOCK SLAUGHTERINGS AND MEAT PRODUCTION

- 5** The statistics on slaughterings for red meat production are based on a monthly collection from abattoirs and other major slaughtering establishments and include estimates of animals slaughtered on farms and by country butchers and other small slaughtering establishments.
- 6** Red meat is shown in carcass weight and excludes offal.
- 7** Care should be taken when using this information as the figures only relate to slaughterings for human consumption and do not include animals condemned, slaughtered for pet food or those killed for boiling down.
- 8** Poultry slaughterings and meat produced statistics have been compiled from returns supplied by commercial poultry slaughtering establishments and comprise boilers, fryers and roasters. Many small producers are excluded from the collection; however, the statistics represent a high level of coverage. Tasmanian, Northern Territory and Australian Capital Territory data are excluded from the Australian total.
- 9** Chicken meat is shown in dressed weight of whole birds, pieces and giblets. Some slaughterings and meat production statistics for 'Ducks and Drakes' and 'Other Fowls and Turkeys' are available by contacting the ABS on Hobart 03 6222 5974 or by writing to GPO Box 66, Hobart Tasmania 7001 (Attention: Agriculture Section).

EXPORTS OF FRESH, FROZEN AND PROCESSED MEAT

- 10** Table 20 shows exports of fresh, frozen and processed meat, excluding offal. International trade statistics are compiled by the ABS from information submitted by exporters and importers or their agents to the Australian Customs Service. Factors can be applied to beef, veal, mutton and lamb bone-out figures to derive bone-in carcass weight which, when added to bone-in figures, shows total exports in carcass weight. The factor for beef and veal is 1.5 and for mutton and lamb, 2.0. This information is sourced from Department of Agriculture, Fisheries and Forestry—Australia.
- 11** Beef also includes buffalo meat. Bacon and ham shown is the cured carcass weight of smoked or cooked bacon and ham. It also includes the stated net weight of packs of canned bacon and ham. Canned meat is shown as the canned weight and excludes canned bacon and ham.

LIVE SHEEP AND CATTLE EXPORTS

- 12** Table 21 contains statistics of the number of live sheep and cattle exported, the gross weight, gross value and unit value. The unit value is obtained by dividing the gross value by the number of animals exported. Sheep and cattle exported for breeding are excluded.

EXPLANATORY NOTES

MILK

13 Tables 2, 22, 23 and 25 contain statistics collected by the Australian Dairy Corporation (ADC). Whole milk intake by factories includes the whole milk equivalent of farm cream intake. Market milk sales includes white, flavoured, high and low fat milk and UHT milk.

WOOL RECEIVALS

14 The statistics in tables 2, 24 and 25 show the amount of taxable wool received by brokers and purchased by dealers from wool producers. It excludes wool received by brokers on which tax has already been paid by other dealers (private buyers) or brokers.

15 The information shown is on the basis of the state in which wool has actually been received and does not necessarily reflect the production of wool in that state.

SEASONAL ADJUSTMENT

16 Seasonal adjustment is a means of removing the estimated effects of normal seasonal variation from the series so that the effects of other influences can be more clearly recognised.

17 In the seasonal adjustment of the livestock estimates, account has been taken of both normal seasonal factors and 'trading-day' effects, where significant, (arising from the varying length of each quarter and the varying numbers of Sundays, Mondays, Tuesdays etc. in the quarter). Adjustments are also made for the effects of change in the date of Easter holidays, again, where significant. Seasonal adjustment does not remove from the series the effect of irregular influences (e.g. abnormal weather, industrial disputes).

18 The state component series have been seasonally adjusted independently. Therefore, the adjusted components may not add to the Australian Group totals.

19 As happens with all seasonally adjusted series, the seasonal factors are reviewed annually to take account of each additional year's data.

TREND ESTIMATES

20 A trend estimate is obtained by reducing the irregular component from the seasonally adjusted series. In this publication trend estimates are generally derived by applying a seven term Henderson moving average to the seasonally adjusted series. The seven term Henderson, (like all Henderson averages) is symmetric, but as the end of a time series is approached, asymmetric forms of the average are applied. Unlike the weights of the standard seven term Henderson moving average, the weights employed here have been tailored to suit the particular characteristics of individual series. While the asymmetric weights enable the trend to be calculated for recent quarters, it does result in revisions to the estimates for the most recent three quarters as additional observations become available. Revisions of trend estimates will also occur with revisions to the original data and re-estimation of seasonal factors.

21 Sensitivity analysis indicates the potential magnitude and direction of revisions created to the last three estimates. It aims to show how a specified movement in the seasonally adjusted data in the next period will affect the trend path of the time series. By showing how sensitive the trend estimates are to the addition of new data, the analysis provides information which can be used in the assessment of the trend's stability.

22 For further information, see *Information Paper: A Guide to Interpreting Time Series — Monitoring 'Trends', an Overview* (cat. no. 1348.0) or contact the Assistant Director, Time Series Analysis on Canberra 02 6252 6345.

EXPLANATORY NOTES

RELATED PUBLICATIONS

23 Current publications and other products released by the ABS are listed in the *Catalogue of Publications and Products* (cat. no. 1101.0). The Catalogue is available from any ABS office or the ABS web site <<http://www.abs.gov.au>>. The ABS also issues a daily Release Advice on the web site which details products to be released in the week ahead.

GENERAL ACKNOWLEDGMENT

ABS publications draw extensively on information provided freely by individuals, businesses, governments and other organisations. Their continued cooperation is very much appreciated. Without it, the wide range of statistics published by the ABS would not be available. Information received by the ABS is treated in strict confidence as required by the *Census and Statistics Act 1905*.

SYMBOLS AND OTHER USAGES

billion	thousand million
ML	million litres
n.y.a.	not yet available
n.p.	not published
t	tonnes
..	not applicable

FOR MORE INFORMATION...

- INTERNET* **www.abs.gov.au** the ABS web site is the best place to start for access to summary data from our latest publications, information about the ABS, advice about upcoming releases, our catalogue, and Australia Now—a statistical profile.
- LIBRARY* A range of ABS publications is available from public and tertiary libraries Australia-wide. Contact your nearest library to determine whether it has the ABS statistics you require, or visit our web site for a list of libraries.
- CPI INFOLINE* For current and historical Consumer Price Index data, call 1902 981 074 (call cost 77c per minute).
- DIAL-A-STATISTIC* For the latest figures for National Accounts, Balance of Payments, Labour Force, Average Weekly Earnings, Estimated Resident Population and the Consumer Price Index call 1900 986 400 (call cost 77c per minute).

INFORMATION SERVICE

Data which have been published and can be provided within five minutes are free of charge. Our information consultants can also help you to access the full range of ABS information—ABS user-pays services can be tailored to your needs, time frame and budget. Publications may be purchased. Specialists are on hand to help you with analytical or methodological advice.

- PHONE* **1300 135 070**
- EMAIL* **client.services@abs.gov.au**
- FAX* 1300 135 211
- POST* Client Services, ABS, GPO Box 796, Sydney 2001

WHY NOT SUBSCRIBE?

ABS subscription services provide regular, convenient and prompt deliveries of ABS publications and products as they are released. Email delivery of monthly and quarterly publications is available.

- PHONE* 1300 366 323
- EMAIL* subscriptions@abs.gov.au
- FAX* 03 9615 7848
- POST* Subscription Services, ABS, GPO Box 2796Y, Melbourne 3001



2721500012024
ISSN 0728-4047

RRP \$22.00